

Stenhøj Mascot 3311 S, F & CF

Stenhøj Mascot 3311 S, F & CF

Mascot 3311 is a single motor, 2-post electro-mechanical lift with base frame.

Stenhøj Mascot 3311 S, F & CF are equipped with system against nut breakage, internal arm locking system that is automatically released in bottom position; as well as chain breakage system.

Mascot 3311 S, F & CF have lifting capacities of 3 t and are equipped with screw pads, flex pads or combi flex pads.

We offer a set of pad extensions, which increases the height by 20 mm as optional extras.

The lift is as standard without rubber post covers.



The Mascot 3311 S, F & CF control unit is new and with impulse system.

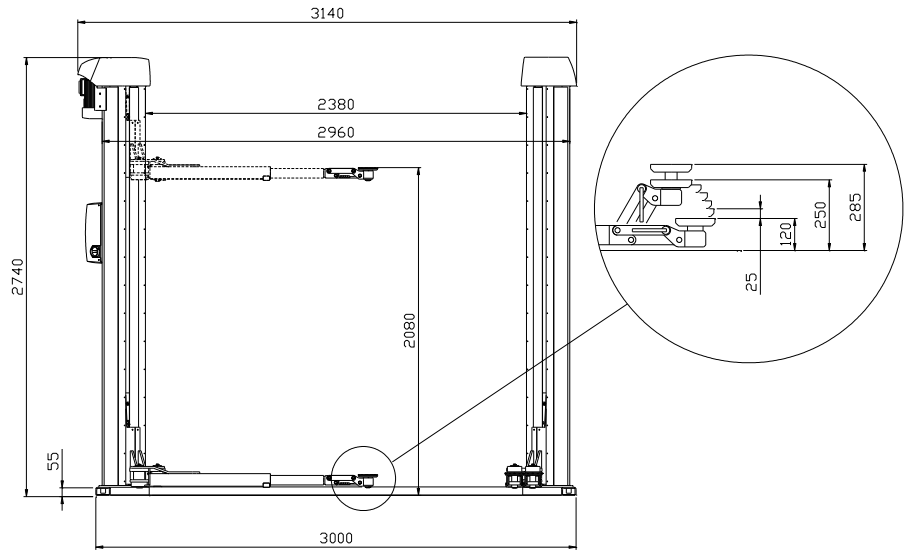


STENHØJ
lifting the level

Stenhøj Mascot 3311 S, F & CF

Stenhøj Mascot 3311 S, F & CF

Mascot 3311 is a single motor, 2-post electro-mechanical lift with base frame.



MASCOT 3311 CF

Lifting capacity:
3000 kg

**Lifting/lowering
time:**
55 sec.

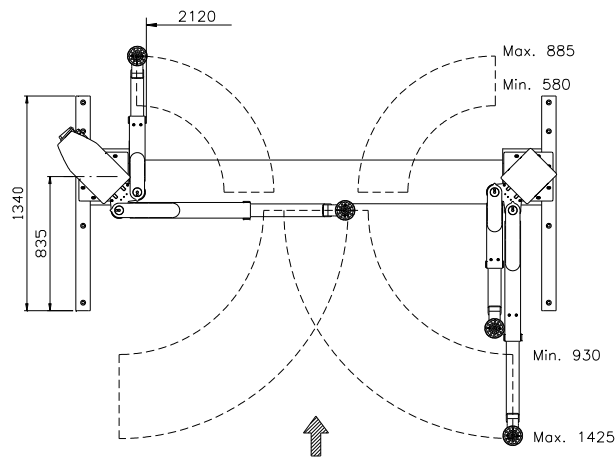
Stroke length:
2080 mm

Max. lifting height:
2245 mm

Min. height:
120 mm

**Min./max. arm
length:**
580/885 mm
930/1425 mm

Motor:
1 x 2.8 kW



Mascot 3311 CF has adjustable combiflex pads – adjustable from 120 to 285 mm. We offer a variety of extra flex and U-pads for this lift type.



STENHØJ
lifting the level

Stenhøj Mascot 3311 S, F & CF

Stenhøj Mascot 3311 S, F & CF

Mascot 3311 is a single motor, 2-post electro-mechanical lift with base frame.

MASCOT 3311 S

Lifting capacity:
3000 kg

**Lifting/lowering
time:**
55 sec.

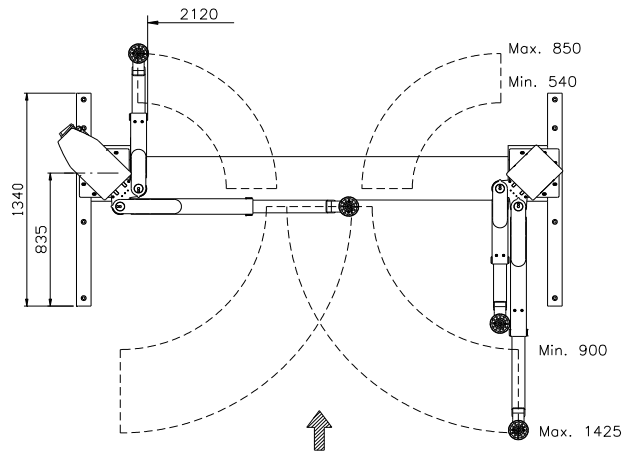
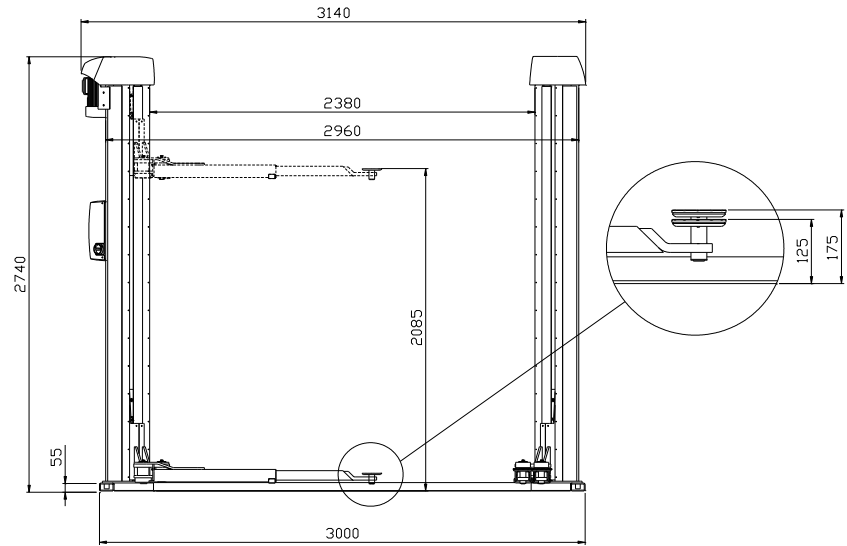
Stroke length:
2085 mm

Max. lifting height:
2135 mm

Min. height:
125 mm

**Min./max. arm
length:**
540/850 mm
900/1425 mm

Motor:
1 x 2.8 kW



Mascot 3311 S has adjustable screw pads – adjustable from 125 mm to 175 mm.

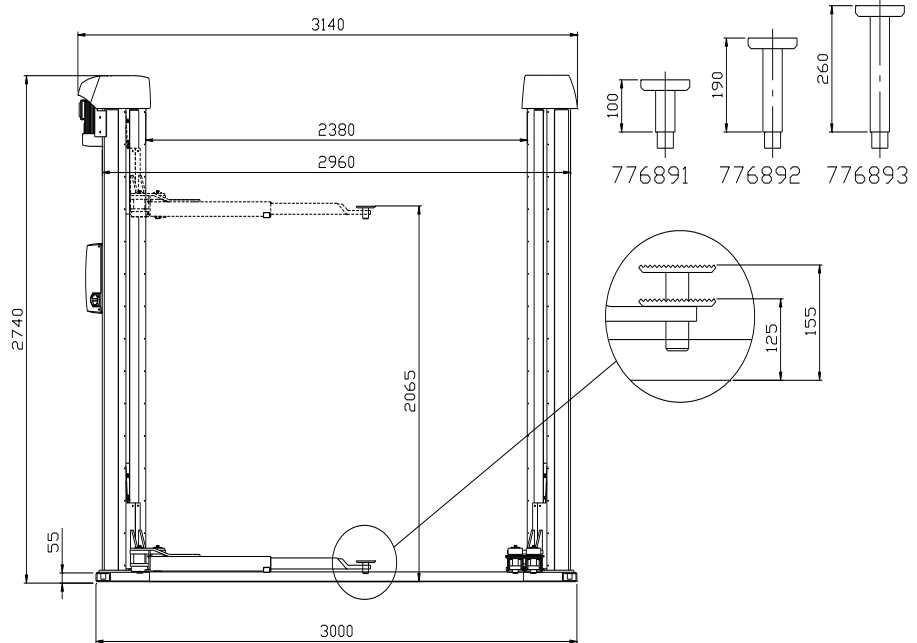


STENHØJ
lifting the level

Stenhøj Mascot 3311 S, F & CF

CORROSION-PROOF SURFACE TREATMENT

Stenhøj lifts are led through a sling purifying plant (according to SA2.50 – ISO-Norm 8501-1:2007), dipped in primer and finally led through an electrostatic powder bake plant.



MASCOT 3311 F

Lifting capacity:
3000 kg

Lifting/lowering time:
55 sec.

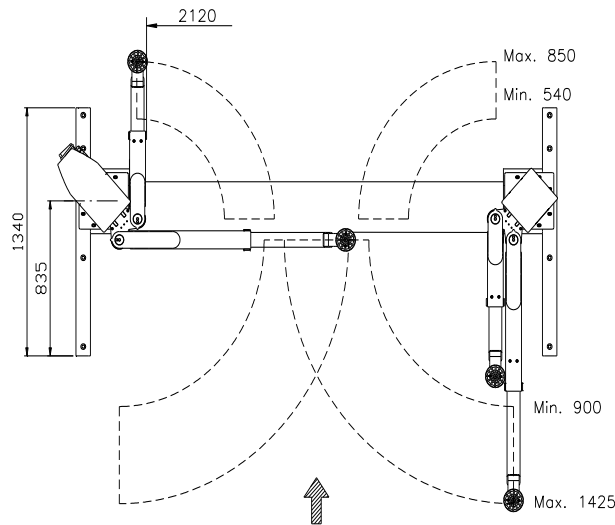
Stroke length:
2065 mm

Max. lifting height:
2095 mm

Min. height:
125 mm

Min./max. arm length:
540/850 mm
900/1425 mm

Motor:
1 x 2.8 kW



STENHØJ
lifting the level

Stenhøj A/S
Denmark

Tel: +45 76 82 13 30
Fax: +45 76 82 13 31
Mail: info@stenhoj.dk
Web: www.stenhoj.dk

Standard colours

Dark grey RAL 7016
Light grey RAL 7042

No liability accepted for specifications, which are subject to alteration.